

CAIM



HETTON HALL - AN UPDATE

Trevor Miller writes

Inside this issue:

Iona Pilgrimage	2
Community in the USA	3
Feeling the Financial Pressure	4
Easter Workshops 2004	6
Call to Prayer - 1/2/04	7
News from Cloisters	8
Angel of the North...	10
Brigid Blessing	13
Giving Form	17



...this has been and is a very difficult time for those who live and work at Nether Springs...

In the last CAIM we reported on the current situation at Hetton Hall where we are facing the need to meet substantial requirements and improvements as regards Fire regulations and Health and Safety issues. A major emphasis of the initial inspection report was our need as an 'Employer' to fulfil the legal requirement of undertaking an authorized Fire risk assessment of the 'workplace', formulate an action plan, and be seen to begin the work in the order of greatest priority.

To this end an independent Fire Engineer known to our Landlord was asked to give us the required professional advice on what is necessary or advisable along with an estimate of the potential costs involved. At the end of November he undertook a thorough fact-finding inspection of the whole building prior to their being a more detailed Fire Risk Assessment and was fairly brutal in his assessment. He said quite openly that because of the difficulty of classification most Fire Officers would err on the side of caution and class Hetton Hall as a hotel. In our current state this would mean either immediate closure or giving us an Improvement Notice, which meant that we had to do the necessary work immediately on threat of closure.

We still await his report although we know that substantial work will be necessary including emergency 'maintained' lighting on all corridor fire routes and exits which are activated should an electrical failure happen. Also there would need to be fire doors throughout with self-closing devices and intumescent strips around the doors. Our Fire Alarm system will need a major overhaul.

As we thought the area of the Tower and the upstairs of the Stable Block are by far the most problematic areas. To enable the Tower rooms to be put back into service, considerable improvements would be necessary and very costly because of the listed building regulations. The Stable Block situation is the most difficult, and there is no doubt whatsoever that it would be condemned. We are currently thinking through the options we have, one of which is that the whole of the Stable Block reverts to a private dwelling, which would not be subject to the same regulations.

As you will appreciate this has been and is a very difficult time for those who live and work at Nether Springs - especially as the concern over the future of our homes as well as the Hall has been exacerbated by the uncertainty and vulnerability of the present re finance.

Already the situation has had huge consequences for us financially before we even begin to address further expenditure on what is to be required of us in the immediate future. For instance, even though you will appreciate that while it has never been (or will be) our intention that the Nether Springs be 'a guest house' solely to make money, we have to be realistic and acknowledge that people staying at the Nether Springs is a major part of our 'basket making' to enable us to 'put food on the table and keep a roof over our heads.' In this, it has to be said that coupled with the traditional lean months of

November, December, January and February, we have had the Tower bedrooms out of use since the end of July this year, pending the fire risk assessment and this alone has meant that even with a conservative estimate of 4 to 5 people instead of a possible 8 using these rooms over this period, our potential income from these rooms could well have been up to £10,000. This would have been enough in itself to wipe out our current deficit. (See Finance article)

We now find ourselves in a 'Catch 22' situation - in order to re-open the Tower rooms so as to help put right the above, we need to put in various fire risk requirements. These include fire doors specially made to blend into a listed building, self-closing devices, intumescent strips etc. and this costs a lot of money. We don't have the money because we have limited accommodation etc.

We need much wisdom and prayerful reflection on the challenges, choices and consequences that are ahead of us in the immediate future.

Oban Ferry Terminal 3pm Saturday 1st November.



I made it ! Having left Mid-Wales the previous night, driven, flown, travelled by coach (twice) and staggered the final few hundred yards under a much-too-heavy rucksack, here I was, right on time. But who and where were these mysterious 'others'? Shouldn't we be wearing carnations or something?

Then the extraordinary began.....somehow recognition was taking place between complete strangers, warm greetings were exchanged and I found that, from that moment on, I was a part of something that would be a source of deepening joy and wonderpart of the Northumbria Community.

It would take too long to tell the many fine details of what happened to us in that wild and timeless place, but the contrast between our dark and stormy arrival and our poignantly calm early dawn departure is something I shall remember always. Up until that time I had only known the 'alone'; now I know what the 'together' means and I shall carry that knowledge always in my heart.

Also there were challenges that grew out of inspirational daily study sessions, here are a few I brought home:

journeying without maps

authentic worship flowing out of the life we live

creating a safe place in which we can make mistakes and ask questions

passionate commitment to Christ.



Thank you Iona, thank you Roy, and everyone who shared the retreat with me, for your warm sincerity and your humour, and thank you to those who worked behind the scenes to make it all possible.

My love and prayers are with you all. Shirley Elwell.

New Community Leaders for USA



Paul and Mary Cullity of Keene, New Hampshire are to become the Leaders of the Community in the USA. In this they will be Father and Mother of the Community responsible for overseeing and directing, guarding and guiding the 'building the new on foundations of old' as it relates to the USA. They will work closely with a new Board of Directors yet to be finalised. This is a God-given opportunity for them to exercise their leadership gifts in relation to the Community they have been vitally involved with for over 20 years.

Through All the Generations

It was a great joy to be gathered as a family for a week at Christmas here in Wooler. Eating, drinking, walking, partying, shopping, worshipping and celebrating, Christmas together was filled with laughter, conversations, catching up and sharing of things past, together with future hopes, plans and aspirations.

It did, however, strike me as never before, that the focus of our conversations was shifting from that of what we as parents were doing (important as that is) to the lives, activities and developments with our children. The experience of seeing such developments is one of much joy, a little apprehension and the usual parental concerns for the well being of those whom we love and have seen grow and develop as children and now as adults. Love and support, advice and encouragement are given and received, but the days of determining, effectively controlling and directing their paths are gone. They, drawing on many of the values that we have bestowed upon them, are making their own decisions and living their own lives independent yet still related and connected to we, their parents.

This experience rings a chord in my own heart when I think about the Community of which I remain a part of as one of the Founding Few. The next phase of transition that we entered last year feels like that of a parent who has laid some of the foundations, directed and informed the Community thus far, but who must now stand back, create the space and make room for the next generation to take the Community on, building the new on foundations of old. Advising, mentoring, encouraging and affirming is what we in the first generation can and should be doing to ensure the well-being of the Community in the present and with its next generation of Companions and Friends taking the Community into the future. Being faithful to the story that God has sown in our hearts, but allowing and giving permission for succeeding generations to write new chapters under God in the ongoing story of his dealings with us as the Northumbria Community.

May 2004 with all its opportunities and challenges be one of continuing to know God's grace and goodness whether we be among the Founders, the Few or the Many, first, second or emerging new third generation.

"...create the space and make room for the next generation to take the Community on..."

CAIM's Youngest Reader?



Baby Joaquim, grandson of Ian and Joy Corsie shows that he is already a person of great spiritual discernment and good taste.

We also rejoice with the Corsies over the good progress of grandson Cameron, born 3 months premature, for whom many of you are praying.

Cell and Coracle



News of Mission and Monastery

The Challenge of Mission – Leadership is the key

As long ago as 1992, Peter Wagner, in a throwaway remark at a DAWN Congress noted that for mission to succeed, thousands of leaders needed to be trained in mission. The immediate context that Wagner had in mind was that of church planting but the question that he raised remains relevant for mission beyond that of church planting itself.

That challenge from Peter Wagner, has at last been taken seriously. The successor body to Challenge 2000 – Together in Mission, has asked the question, how could we train significant numbers of lay leaders, such that they could remain employed, stay in the church where they are making a useful contribution, learn practical leadership skills and receive a worthwhile qualification at the same time?

One solution is to take training to where people are, in other words, to train students in local centres through a system of evening classes and intensive weekends. Together in Mission, in partnership with Birmingham Christian College has devised a first step in such a process of leadership training by establishing a post-graduate qualification in Missional Leadership validated by the University of Wales.

It is one part of an INTENTIONAL LEADERSHIP DEVELOPMENT programme which offers an open access approach. In other words, life experience is as important as prior academic qualification. The course features character development, the communication of specific leadership skills as well as knowledge about leadership issues. The issues of character, skills and knowledge (heart, hands and head) operate in dynamic relationship with each other.

Just imagine being able to train your leaders in a highly practical course, in a local centre, keeping them focussed on their local leadership contribution and allowing them to obtain an M.A. in Missional Leadership at the same time. By addressing this key element, it might well be possible, not only to successfully develop initiatives in church planting but also to transition existing congregations from maintenance to mission using church planting principles.

We have sought to use practitioners in this training approach. Roy Searle has been invited to write the areas that deal with the spirituality of a leader and the character of a leader. Roy will also teach on the course.

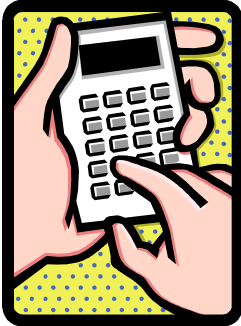
To find out more about this training approach, contact Together in Mission at Gold Hill Baptist Church, Gold Hill Common East, Chalfont St Peter, Bucks SL9 9DG or phone Kevin Popely at Gold Hill Baptist Church (01753 887173 or e mail: Kevin@popely.fsnet.co.uk.

Feeling the financial pressure

As reported elsewhere in this issue the situation regarding Hetton Hall, which has come unwanted and uninvited, has been a major contributor to the dire financial situation we now find ourselves in as a Community. Although we have been in similar difficult financial circumstances many times before, it is definitely the case that the current position we find ourselves in is highly unusual in that it brings together factors that are unlikely to be repeated.

This immediate situation has highlighted a much wider issue that we have mentioned many times before, namely: that the financial pressures are there principally





because along with the growth and development of those wanting to draw from our life and resources, there has not been a corresponding growth in our regular support base, which has meant that the increasing emotional and financial burden has been at times quite debilitating.

Despite financial integrity, good stewardship and wise management of monies and resources including the regular use of volunteer workers, we are not only currently struggling to make ends meet, to pay our bills, rent etc. we also face a very real risk of being unable to maintain full-time personnel in the immediate future.

Those who work for the Community are making considerable cutbacks and several folk are finding other means of income from part-time employment: all may have to take a reduction in stipend and remuneration. This is why it was felt that the real situation had to be shared with the Community at large in order for them to help carry the load; to bear one another's burdens and so fulfil the law of Christ during this difficult time financially.

Over the Christmas and New Year period alone, we faced a shortfall of £8,500 and all of this did not take into account the essential work needed to be carried out on the Hall to meet new legislation and our new landlord's and Fire Certificate requirements, together with the probable closure of the Hall and the inevitable limited use of accommodation during such alterations being carried out.

It is important that we increase the sense of ownership among Community Companions and those Friends and others who seek to support us.

We are committed to the principle and practice that recognises our dependency upon God, and realise that the whole question of financial giving is a sensitive issue. However, we also appreciate that if we never addressed the budget figures of income/ expenditure in a realistic way and tackled the issues that they raise we would be charged with inappropriate management, bad stewardship and a failure to address our responsibilities.

Over the last few years we have been privileged to see God's hand and people's generosity in clearing enormous debts incurred in our pioneering years and in putting in place more accountable, transparent and appropriate structures for a developing community. We do not want to return to a situation of crippling debts taking all our focus.

This is why even a gift of £5, £10 or more a month, would make an enormous difference to our ability to fulfil our vocation and vision in God. Currently Companions are encouraged to give £20 monthly, Gift Aided if possible. Whatever you are able to give, we simply ask that you prayerfully consider your response to our desire for corporate belonging and responsibility in this area. We want to work on the biblical principle of 2 Corinthians 8:12 'God will accept your gift on the basis of what you have, not on what you haven't.

We believe that 'the future belongs to those who have hope' and that the many exciting opportunities and challenges that God is laying on our hearts as a Community puts us at the cutting edge of the Church and culture. We want to make a difference and with your prayerful involvement and financial support we can increasingly be among those who offer hope to society. Can you help us as we together address this pressing issue?

Please find the giving form attached as page 13 ([click here](#)) and envelope, provided for this purpose. Thank you in anticipation.

Continued



Easter Workshops 2004

Easter Workshop – in Northern Ireland

The workshop will run from Friday morning, 16th April, through to Sunday afternoon 18th April, based at Saul in County Down and including the River Slaney, where Patrick first landed in Ireland, Inch Abbey, Downpatrick and Ballydugan. Do join us for all or part of the workshop, which will include teaching, worship, pilgrimage, sharing, praying and eating together as we explore the theme of *Restoring the Broken Altars*.

Outline programme

Friday	10.30 am	Assemble at Saul
		'Gather and Setting the Scene'
	1pm	Lunch
	2.30 pm	<i>Beginnings</i> - River Slaney, Prayer Pilgrimage Walk.
	evening	Informal sharing time.
Saturday	10.30 am	<i>Laying the foundations of old</i>
	1pm	Lunch
	2.30 pm	<i>Restoring the Broken Altars</i> workshops, seminar & prayer walk & optional trip to the St. Patrick Centre.
	evening	Gathering - Ceilidh
Sunday		Morning Church Service
		Inspired by the Past, Re-imagining the present
	1pm	Lunch
	2.30 pm	Commitment and Blessing.

Costs

- Non residential - suggested donation £5 per day to include lunch and refreshments.
- Residential - Ballydugan £80, includes full board accommodation & food (It is possible to stay at Ballydugan in the lovely comfortable cottages with other Community folk from Thursday, through to Tuesday, 20th April for the above price).

Alternative accommodation would be in the homes of friends of the Community in the area or you may wish to make your own arrangements.

Transport

By Air: flights into Belfast City (preferably) or Belfast International (but further out). If booked early there are cheap flights available from many UK airports. We can seek to arrange transport to and from Belfast to the Workshop for those staying at Ballydugan if notified well in advance.

By Ferry: Stranraer to Belfast, the Stena HSS is highly recommended and there is free parking for vehicles at Stranraer terminal for those who don't need to bring their cars over to Ireland.

By car coming from Wales and the South of England, the ferry from Holyhead to Dun Laoghaire, Dublin is also an option.

For further details and a booking form

Please send an SAE to Jean Watson, 8 Distaff Road, Poynton, SK12 1HN, marked 'Easter Workshop, Ireland' and if you'd like to know a few more details please contact jean.watson@northumbriacommunity.org or telephone 01625 874493. Residential accommodation is limited so please book early.

Easter Workshop – in Evesham



The workshop will run from Friday evening, 16th April, through to Sunday afternoon 18th April, based at Evesham in Worcestershire.

There are Northumbrian connections with Evesham and in the early 11th century three monks from Evesham Abbey were moved by stories of the Viking ravages to make a pilgrimage to the north east. They initiated the refounding of the coastal monastic houses including Whitby and Lindisfarne.

Do join us for all or part of the workshop, which will include teaching, worship, pilgrimage, sharing, praying and eating together as we explore the theme of *Restoring the Broken Altars*.

Programme

We plan to gather on the Friday evening and finish after lunch on Sunday.

Costs

We would ask for a donation towards costs including food and the venue.

You will need to make your own arrangements for accommodation but possible suggestions (including on-site camping) will be included with the booking form.



For further details and a booking form

Please send a large SAE to Ingrid Cumming, at Hetton Hall, Chatton, Alnwick, NE66 5SD, marked 'Easter Workshop, Evesham'. If you can offer practical help please let me know asap. If you need more details please contact Ingrid via office@northumbriacommunity.org (please put subject as Easter Workshop-Evesham) or telephone 01289 388552.

Gathering for Easter Sunday, 11th April 2004, on Lindisfarne.

The morning service with communion at St Mary's C of E church is at 10.45am. We will then meet for Midday prayer and 'Christ is a Light' at St Aidan's statue followed by the renewal of our vows and 'High Praises' in the Priory.

We will share a picnic lunch together at the village hall. This year the tide stays open until 6.30pm so there is the opportunity to enjoy the afternoon on the Island. Please bring your own picnic and whatever other refreshments you may need for the day (tea and coffee will be available over lunch time).

If you are unable to join us on the Island but would like a copy of the Renewal of Vows liturgy then contact the community office on 01289 388235 or office@northumbriacommunity.org

Easter Sunday



on Holy Island

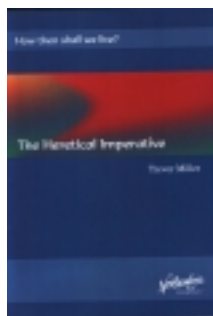
A Call to Prayer – Brigid's Day, Sunday 1st February

We are inviting and calling all Companions, Friends and Supporters to pray for God's blessing, provision and protection upon the Community. Pray for the Nether Springs, our Mother House at this time, specifically for the situation we face with the fire regulations and building work required, together with the negotiations and decisions concerning future developments; for God's blessing upon all the houses of prayer and hospitality associated with the Community e.g. Ballydugan in Northern Ireland, Poustinia in Exeter, Bridge House in Shillingford, Duncraig on Iona, Y Plas Chwilio in Wales, Fountain Gate in London, and upon all the homes of Community Companions and Friends as we mark this special day for prayer.

The Brigid blessing is attached to Caim—click here! – and in CDP on page144.

HOW THEN
SHALL WE LIVE
...experiences
of a dispersed
Community.

News from Cloisters



From Miriam Sayer, in Tasmania:

Healing and the power of positive attitudes



Quite some time ago I was asked to write something concerning my experience of positivity in my state of health. I have made several attempts but haven't felt they conveyed quite what I wished.

Using Lectio Divina in my daily reading I seek guidance for my daily living. I also practise translating the scripture into my language as I find most translations sexist and limiting. My state of health would have been quite different if it were not for the continuing love, prayers, positive thoughts and consideration of my countless friends, communities and my beloved family.

Here is a recent example.

Psalm118: 17-18

I will not die but live and will proclaim what the Lord has done. The Lord has chastened me severely but has not handed me over to death.

My translation

I will be enlivened and will tell others what I believe to be the basis of my health - the support, love, prayers and continuing care of others.

I have been greatly challenged by the meaning of my part in the Wholeness (God) but have been drawn more deeply into its earthly meaning.

HOW THEN SHALL WE LIVE?

Don't forget that the first four titles in this new series of Community booklets are now available, price £4 each by mail order from: Cloisters (01289 388235 or cloisters@northumbriacommunity.org)

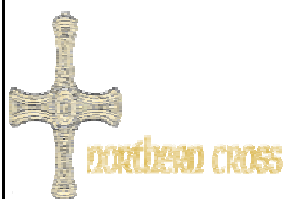
Heretical Imperative Trevor Miller's discussion of what this key (but difficult-to-understand) concept really means. The 'heretical imperative' is one of the foundation stones of the Community, and it is vital that we understand what we mean by it as we 'build the new on the foundations of old.'

The City Without a Church The full text of Henry Drummond's meditation on the church in our own cities - in the light of John's Revelation of the Holy City. It is as fresh today as when it was written over 100 years ago; and is an inspiration to 'church without walls' and 'kingdom in the streets.'

Follow the Example The texts of the liturgies on pages 144 to 203 of *Celtic Daily Prayer*, making them readily accessible for individual and group use in booklet form. Particularly useful for Community groups.

Complines The Compline liturgies in a larger print size so that they are easier to use by candlelight.

More titles in this series are being prepared. If there is a topic that you would particularly like to see included in the series as an aid to understanding the Community, its history and its ethos, please let Ian Corsie (the series editor) know (on 01289 387257 or iancorsie@bigfoot.com). Or perhaps you may have something you wish to contribute: the series is for sharing 'work in progress' if it is to the benefit of the wider Community.



Holy Island is special to many of those involved with the Northumbria Community. Yet as the Community becomes known more widely, there are many who have never visited this spiritual homes of the Celtic church of yester year. I was one of those. So last year my 12-year-old son and I joined one of the four pilgrim groups that walk between 70 and 120 miles to Holy Island during Holy Week, under the banner of Northern Cross. I have great memories of that week in April; walking cliff top paths in warm sunshine; fellowship and community; times of quiet for reflection; walking barefoot across the Pilgrim's Causeway to Holy Island. So I'll be on Northern Cross 2004. If you're interested in joining us, look at www.northerncross.co.uk or send a sae to me at 42d Eastern Avenue, Reading, RG1 5RY

Chris Cobbold

Changes, changes, changes...

During the early part of 2004 The Telling Place team will be finalising the process of turning TTP into a charitable company in its own right. During the 6 years that TTP has been in existence it has been a partnership between the Community and Bible Society and although this partnership will continue in amended form, TTP will become a separate charity, responsible for its own payroll and staff, its own strategies and budget, and its own fundraising. For the first time we will be introducing subscriptions for those who wish to be part of our Network

There continues to be tremendous opportunity in the arena of storytelling. This year's training events have all been well attended and received enthusiastic feedback. We are developing relationships with several theological colleges, working with students and staff. The Epic storytelling of MARK sold out theatres in Swindon, Manchester and Barnet.

Please pray for the people who are being approached to serve on the new board; the staff: Dave Ward, Director, Dave Robertson, Creative Consultant and Jean Watson, Administrative Support; and for the plans for this year's programme, which includes a Gathering, new workshops, a storytelling retreat and a 4/5 day school, and possibly, a tour of smaller arts centre theatres with MARK.

The Telling Place

Two Communities...



The long drive northwards

- through the heavy traffic
 - pounding up the motorways
 - leaving the hustle and bustle of city life
- further and further behind

Then arrival

- in the peace and tranquillity of the north Northumbrian hills
- to a welcome always loving always true

Once again experiencing the reality of being part of Community.

Time to meet with God, to reflect,

Time for sharing with others journeying the same road

Time for encouragement and renewal.

But still holding in my heart that other community, where I live and work

which fills my waking hours,
where face to face I meet with those
for whom life is tough,
whose poverty and suffering,
deprivation and hardship
go hand in hand.

Two communities – both integral to
the life that is mine,
held together in some indefinable way
at that point which is me.

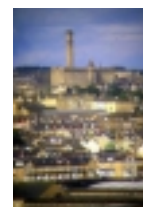
So with the long drive southwards

- pounding down the motorways
- through the heavy traffic

I go back into the hustle and bustle
of the city life –
where I shall meet with God,
finding in His Presence

Peace for my soul and
Hope to share with
those around me.

Joan Parker of Bradford
18-1-03



Antony Gormley



The 'Angel of the North' sculpture – a contemporary image of Christ?

Antony Gormley's sculpture 'Angel of the North' was erected adjacent to the A1 south of Gateshead in 1998. Standing on a green hillock, it is a cruciform figure, legs bound together, enormous outstretched arms made of rusted aeroplane wings. The Angel faces South. Since my first encounter in New Year 1999 it has acted as an icon for me – an image of Christ. This attempt to articulate what this modern image reveals will be inadequate as each fresh encounter brings new insight. I hope it inspires readers to visit it.

I interviewed on Tyne Tees television, in January 2003, Antony Gormley said the inspiration for Angel of the North came from a childhood spiritual experience which he described as a strong feeling of the presence of a guardian angel. Personally I would substitute the Holy Spirit, the Spirit of Jesus for the 'presence'. The interviewer described Angel of the North as Gormley's 'best known sculpture: comforting, uplifting and impossibly oversized'. Jesus is God's best-known revelation. Jesus comforts, Jesus uplifts us. The love Jesus offers from the cross is 'impossibly oversized'. Just as one regards the size of the Angel with awe, so the Christian feels humbled and overwhelmed by Christ's sacrifice on the cross. Stuart Townend's hymn articulates this emotional response and I have underlined some phrases that directly relate to the Angel sculpture.

*How deep the Father's love for us,
How vast, beyond all measure,
That He should give His only Son
To make a wretch His treasure.
How great the pain of searing loss-
- The Father turns His face away
As wounds, which mar the Chosen One
Bring many folk to glory.*

*Behold the man upon a cross,
My sin upon His shoulders.
Ashamed, I hear my mocking voice
Call out among the scoffers.
It was my sin that held Him there
Until it was accomplished
His dying breath has brought me life –
- I know that it is finished!*



The sculpture's legs are tight together. This recalls for me the fixing of Jesus's feet to the cross. Both the crucified Christ and the Angel are bound, fixed to the ground, rooted to the earth. Jesus chose to be rooted to His created earth, out of love.

The Angel stands on a green hill outside Gateshead 'There is a green hill far away outside the city wall....' says C.F. Alexander's famous hymn.

This hill is above a redundant mine – in olden times mines were often equated with hell. The Angel is rooted above hell. 'He descended into hell' says the Apostles' Creed.

The wings came from a redundant factory and are rusted not beautiful as angels' wings are in medieval paintings. This speaks to me of God's role in renewal and re-creation. Even when our sin mars our beauty, God can re-use us. It also speaks of Christ's vulnerability: Jesus chose the way of the cross and was marred by the tortures involved, so marred he wasn't recognised by Mary Magdalene (John 20).

Gormley describes the sculpture as 'burdened as much as it is blessed'. A burden Christ chose to bear for us which is our blessing '...being born in human likeness and being found in human form, he humbled himself and became obedient to the point of death – even death on a cross.' (Philippians 2 v8) 'God proves His love for us in that while we were still sinners, Christ died for us..... We were reconciled to God through the death of His son..... and saved by His life' (Romans 5 v8-10).

Gormley says the Angel is earth-bound and so big and heavy that despite having wings it could never fly. We worship a God who can do the impossible, miracles, and who chooses a bond with earth but is also bigger than the universe He created.

Gormley says flight is a divine attribute. Our 20th century technological advances have caused some humans to regard themselves as equal with God e.g. current claims of cloning humans suggest humans can now create life, until recently, an attribute unique to God. '*In the beginning God created.....*' Genesis 1 v 1. '*The Lord gives (life) and the Lord takes away (life)*': Job 1 v20.

Gormley says the Angel is an attempt to embody the question 'how does our assimilation of divine attributes change us?' As we commit ourselves to discipleship, asking the Holy Spirit to dwell in us, we face that same question 'how then, shall we live?' What does it mean for us to be Christ's disciples, God's agents in the world?

Gormley says he hopes the sculpture will stand the test of time – parallels of the eternity of God. He says he The Angel is in the midst of the people, not enclosed in an art gallery. God is in the heart of His world, 'though sometimes we may mislead others into thinking he is shut away in Church buildings only opened one day a week.

Gormley put many restrictions on the sculpture. One was it should not be floodlit. Therefore it is illuminated from above, the sun by day and the moon by night – lit from heaven. Starkly seen in the moonlight, to me it speaks of the agony and loneliness Jesus embraced in the crucifixion, in dying for us. Lit by sunrise it speaks of resurrection hope and power. It is the sunrise Angel which is the icon in my prayer corner.

Summarising these thoughts, the Angel of the North is my most meaningful image of God.

- Out of proportion love.
- Choosing to be earthbound, above hell, but lit from heaven.
- A symbol of hope – renewal, re-creation, resurrection power.
- So big it is all-seeing. Yet in the dark, it is not seen. Once the A1 traveller knows where to look, it is spotted – the believer will recognise God's signs in the world that are unseen by many.
- Facing South, the Angel defends and protects what is behind it (the North) and welcomes those who approach from the South.
- It is humble – no kiosk sells tacky souvenirs. It is abused – covered with graffiti.

Illuminated by sunrise it recalls the words of St. Patrick's breastplate as used in the Northumbria Community Daily Morning office.

Christ as a light, illumine and guide me,

Christ as a shield overshadow me,

Christ under me, Christ over me, Christ beside me on my left and my right.

This day be within and without me, lowly and meek, yet all powerful.

New Liturgy.

Norma Charlton has written an 'Angel of the North' liturgy which the Tyneside Community Group prayed, sang and danced at the Angel last July. It was a powerful experience of worship.

Cathy Turton

Calling Communities, 16 – 20 Feb, 2004

An inclusive gathering for Christian Communities throughout Britain and Ireland hosted by the Scargill Community in partnership with the Northumbria Community and the Neighbours Community. An opportunity to bring together people from a broad cross section of Christian Communities; a chance to listen and learn from one another. Dave Ward will be leading some of the sessions at this Conference.

At this stage the programme is flexible and provisional to respond to the needs/priorities of those who attend.

The gathering will begin with evening meal at 6pm on Monday 16th and finish 10 am on Friday 20th February. Cost £98 per adult, half price for under 16 years.

**For further information or to book a place,
Telephone 01756 760234, or email bookings@scargillhouse.co.uk.**





Congratulations to...

Companion of the Community Katherine Whittaker, who married Ian Harris on 27th December...and to Friend of the Community Pete Sandford, who married Jana Vladikova on 28th December.

Soulfriends

Amund Karner would like to thank those people who have responded to the request for feedback on this issue. The revision of the previous material progresses and something should be published through Cloisters soon.

Congratulations to Mark and Jenny Lallemand on the birth of Emily Anna on 22/9/03.

Community Groups

If you would like more information about Community Groups; please contact:

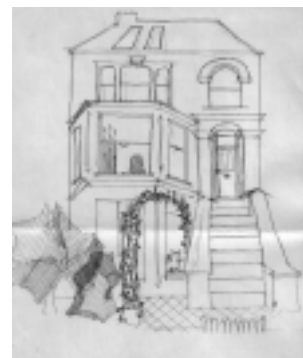
Norma Charlton at
84, Kells Lane, Low Fell,
Gateshead
NE9 5XY.

VOLUNTEERS AT NETHER SPRINGS

Having welcomed several companions to share in the life of the Mother House as volunteer workers last year we are inviting others to consider joining us this year. This is of practical help to those who carry the load week by week but also gives valuable awareness and insight into the day to dayness of the life, work and spirituality of the Mother House. Ideally this period of voluntary work would be for a minimum of one week – from Monday to the following Sunday. Anything less than this would minimise the opportunity to connect with the rhythm not only of the day but also of the week. A longer period of two to three weeks is also possible. You will receive full board and lodging in return for your work. If you are interested in this then could you write to or e-mail the Community office with available dates from the beginning of May onwards. More than one date would be helpful. We will then get back to you as soon as possible.



The Community will once again be leading the worship during Weeks 2 and 3 of Spring Harvest at Skegness (8th to 18th April). There will be a smaller Community team this year, which means that if any Community folk are already booked in (or perhaps this might persuade you into booking up?!) we would be grateful for any assistance you could provide. In particular, Cloisters will be running a bookstall throughout the period and will be needing additional volunteers to help in selling the products and explaining the Community during the many hours that the stall will have to be open. If you can help, please let the Community Office know.



HOSPITALITY AT FOUNTAIN GATE

Fountain Gate is the home of Community companions David & Pam Pott. Many people pass through their doors and Community companions can be assured of a warm welcome! There's a poustinia in the garden and the opportunity to enjoy some peace in the busyness of the city. They are well situated close to Brockley station, which is only 10 minutes from London Bridge. Guests contribute on a donation basis. As a guide, a suggested donation for full board is £25 per guest per day and £20 for bed & breakfast. For more information contact David & Pam at:
Fountain Gate, 58 Geoffrey Road,
LONDON SE4 1NT
Tel/fax: 0044(0)208 694 2220
Email: info@fountaingate.co.uk

Intercessors

If you wish to know more about how you can be part of this vital ministry, please telephone:-

Norma Wise of Newton
Aycliffe on: 01325 312930.

Issue 28
Spring 2004
The copy date
for this edition is
15th March 2004.

© CAIM is the official newsletter of the Northumbria Community.
The Northumbria Community Trust Ltd IPS no: 28305R - an exempt charity registered in England and Wales.

Nether Springs, Hetton Hall, Chatton, Northumberland NE66 5SD
Tel: 01289 388235 Fax: 01289 388510 email: office@northumbriacommunity.org

Editors:
David & Wendy
Ward
Contact via
Community office

Brigid - in welcoming

A Call to Recklessness

You will find that the prayers take you round the house, beginning:

AT THE DOORWAY, then in the LIVING ROOM.

Next you move to the KITCHEN.

There is a blessing to use in each BEDROOM, but special blessings to use as well in a single person's room, a couple's room, or a guest-room, in a child's room, or the room of an older son or daughter.

Read them carefully beforehand and decide which will be appropriate.

Finally you pray a blessing AT THE DOOR or at any place where a cross or Brigid's cross may be.

The householder reads the parts in ordinary type, and everyone reads parts in **bold** type.

At the Doorway

May God give His blessing to the house that is here.

God bless this house from roof to floor,

from wall to wall, from end to end,

from its foundation and in its covering.

In the strong name of the Triune God

all evil be banished, all disturbance cease,

captive spirits freed, God's Spirit alone

dwell within these walls.

We call upon the Sacred Three

to save, shield and surround this house, this home,

this day, this night and every night.

In the Living Room

There is a friend's love in the gentle heart of the Saviour.

For love of Him we offer friendship and welcome every guest.

Lord, kindle in my heart a flame of love to my neighbour, to my enemies, my friends, my kindred all, from the lowliest thing that liveth to the name that is highest of all.

In the Kitchen

I would welcome the poor and honour them.

I would welcome the sick in the presence of angels

and ask God to bless and embrace us all.

Seeing a stranger approach I would put food in the eating place, drink in the drinking place, music in the listening place, and look with joy for the blessing of God, who often comes to my home in the blessing of a stranger.

We call upon the Sacred Three

to save, shield and surround this house, this home,

this day, this night, and every night.

In all Bedrooms say the following plus the additional pieces for specific bedrooms.

Peace be here in the Name of the King of life,

the peace of Christ above all peace,

the Lord's blessing over you.

Plus, For the bedroom of a single person:

May God the Father be the guardian of this place

and bring His peace, that fear may find no entry here.

May Christ be a chosen companion and friend.

May loneliness be banished.

May the Spirit bring lightness and laughter,

and be the comforter of tears.

Courage be at each going out; rest be present at each return,
each day, each night, each going out and each returning.

Plus For the bedroom of a married couple:

Peace between person and person, Peace between husband and wife. The peace of Christ above all peace,
Peace between lovers in love of the King of life.

Plus For a guest room:

May all be welcomed here as the Christ-child at the stable in simplicity and joy, and as Brigid welcomed the poor.
May the smile of the Son of Peace be found here
whenever the door is opened.

Plus In the room of a young child (said by Parent if possible):

They say nothing is given birth without pain.

I have a secret joy in Thee, my God.

For, if Thou art my Father, Thou art my Mother too.

And of Thy tenderness, healing and patience

there is no end at all I pray for *(Name)*.

(Name), may the joy and peace of heaven be with you.

The Lord bless you.

Plus In the room of an older son or daughter present or absent (said by Parent):

Son of my breast... or Daughter of my heart...

the joy of God be in thy face, joy to all who see thee.

The circle of God around thee Angels of God shielding thee

Angels of God shielding thee

Joy of night and day be thine Joy of sun and moon be thine

Joy of men and women be thine.

Each land and sea thou goest Each land and sea thou goest.
Be every season happy for thee Be every season bright for thee
Be every season glad for thee.
Be thine the compassing of the God of life,
Be thine the compassing of the Christ of love,
Be thine the compassing of the Spirit of Grace,
To befriend thee and to aid thee *(Name)*, thou beloved son of my breast. Or thou beloved daughter of my heart.

In a Place of Work

**Peace be here in the Name of the King of life,
the peace of Christ above all peace,
the Lord's blessing over you.**

May God the Father be the guardian of this place and bring His peace. May His love be shared, and His will be found here and peace between all people. May the Spirit bring lightness and laughter here. May He be the strengthener and comforter in times of difficulty.

**Each day, every day, each going out, and each returning,
the Lord bless you and keep you.**

Peace between person and person. Peace between all who work here; the peace of Christ above all peace; peace between friends in the love and service of the King of life. I pray for all who work here..... May the joy and peace of heaven be with you. The Lord bless you.

At the Door (or At a Cross)

**Christ in our coming, and in our leaving
the Door and the Keeper, for us and our dear ones,
this day and every day, blessing for always. Amen**

REF F04